

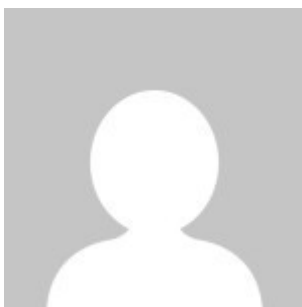
GERMANIA Ibbenbüren «Between the courtyards»

The reorganization of the two areas in Ibbenbüren enables the opportunity to create high quality forms of housing to hit the demands of a constantly changing society and to preserve and strengthen their specific circumstances at the same time. The identity and peculiarity of the new neighborhood is not only characterized by the new building structures. Most likely it finds its definition by utilization of networked spatial sequences and urban spaces which are open to the landscape.

The main reason of the area Diekwiese is the integration with the nearby Lake Aa. The new district is characterized by an orthogonal structure that can flexibly respond to the requirement by type and density of usage. Alternating with public and semi-public places, ending in the foot and cycle paths of Aasee, the district is linked in public recreation space.

To ensure the continued existence of old trees and to safeguard the site specific situation the urban structure at the Werthmühle follows the historical footprint. It also allows a temporary preservation of the sports fields. The result is a compound of four units independently in their geometric alignment. All apartments are accessed via an internal courtyard. These open spaces also function as a meeting place. Between the four units arise out of usable areas such as sports and games courts, youth-theaters and a community center.

About Author



[gda](#)

[See author's posts](#)

[+ Condividi](#)