

FRANCIA Reims «Multitalented City»

The 'Multitalented city' project creates a new identity for an old university campus at the periphery of Reims (France). The campus is transformed into a flexible and self sustaining district which is able to adopt to changes □ environmental, societal, and economic.

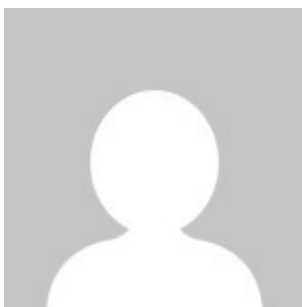
The Backbone of the project are five distinctive squares connected by a continuous public space network which extends to the periphery landscapes. Character of the squares is created by differentiations in typologies, scales and functions which are enhanced by existing site qualities. This results in various programmatic clusters around the squares that are flexible to adopt to future changes.

The squares become a spatial principle to organize sustainable and durable infrastructures where mobility and energy plays an important role. The spatial organization of these elements make residents aware of the sustainable systems they are using.

Spatial development framework based around the squares creates flexibility for implementation. The squares should be activated as places from the beginning. Each surrounding cluster could be developed separately and independently.

The balanced public space structure together with diverse program, efficient mobility organization and sustainable infrastructure systems create a multitalented identity for the Moulin de la Housse campus.

About Author



[gda](#)

[See author's posts](#)

[+ Condividi](#)